



SERIE 219 ■

**PNEUMATIC, HYDRAULIC, HIGH PRESSURE  
HYDRAULIC & GENERAL PURPOSE COUPLINGS**

PNEUMATIK, MITTELDRUCK-HYDRAULIK,  
HOCHDRUCK-HYDRAULIK UND FLÜSSIGKEITEN.



**Interchangeability - Kompatibilität**  
WALTHER 11-012  
WALTHER 11-019

**High Temperature  
Coupling for Thermal Oil**

**Hochtemperatur - Kupplungen  
für Wärmeträgeröl**

Double Shut-off Type  
Beideseitig absperrrbar

**Working Pressure - Betriebsdruck**  
20 Bar - 290 PSI

**Temperature Range Temperaturbereich**  
+325°C (630°F)

**Flow capacity - Größen**  
219.12 NW: 120 mm<sup>2</sup>  
219.19 NW: 300 mm<sup>2</sup>

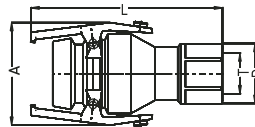
Standard version - Standardversion  
Double Shut-off - Beideseitig absperrrbar  
Seal - Dichtungen: HT -GRADE  
Material - Material  
Steel oil burnished / Stahl-brüniert

Connection - Anschlüsse  
Connection is suitable for screwed  
plug in accordance with DIN 3852-T2

Anschluß ist geeignet für DIN 3852-T2

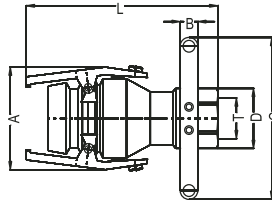
**Couplers and Plugs  
Kupplungen und Nippel**

| d/NW | Connection<br>Anschlüsse<br>(DIN-3852) | Order No<br>Bestellnr. | A | B | C | D | L | SW |
|------|--|------------------------|---|---|---|---|---|----|
|------|--|------------------------|---|---|---|---|---|----|



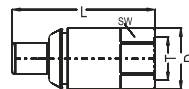
Self Sealing Female  
Threaded Coupler  
Verschlußkupplung (IG)

|    |       |               |    |    |  |  |     |    |
|----|-------|---------------|----|----|--|--|-----|----|
| 12 | 3/4 " | 219.12 DGB 26 | 72 | 42 |  |  | 110 | 36 |
| 19 | 3/4 " | 219.19 DGB 26 | 86 | 46 |  |  | 110 | 41 |
|    | 1"    | 219.19 DGB 33 | 86 | 46 |  |  | 110 | 41 |



Self Sealing Female Threaded  
Coupler With Handle  
Verschlußkupplung mit Handgriff

|    |       |                |    |    |     |    |     |    |
|----|-------|----------------|----|----|-----|----|-----|----|
| 12 | 3/4 " | 219T.12 DGB 26 | 72 | 12 | 110 | 42 | 110 | 36 |
| 19 | 3/4 " | 219T.19 DGB 26 | 86 | 12 | 110 | 46 | 110 | 41 |
|    | 1"    | 219T.19 DGB 33 | 86 | 12 | 110 | 46 | 110 | 41 |



Self Sealing Female  
Threaded Plug Verschlußnippel (IG)

|    |       |                |  |      |      |    |    |  |
|----|-------|----------------|--|------|------|----|----|--|
| 12 | 3/4 " | 219T.12 DUB 26 |  | 37.5 | 95   | 93 | 34 |  |
| 19 | 3/4 " | 219T.19 DUB 26 |  | 46   | 97.5 | 93 | 41 |  |
|    | 1"    | 219T.19 DUB 33 |  | 46   | 97.5 | 93 | 41 |  |

**High Temperature Coupling for Thermal Oil**  
Hochtemperatur - Kupplungen für Wärmeträgeröl

